



THE COUNTY OF ESSEX

SAFE ROUTES TO SCHOOL FY 2024- NEW SIGNAL AT LAKESIDE AVE (CR-636) AND PEASE AVE, VERONA TOWNSHIP



PUBLIC INFORMATION CENTER

Thursday, May 22, 2025
10:30 AM-12:00 PM

Essex County Department of Public Works
900 Bloomfield Ave, Verona, New Jersey 07044

Zoom Link Option, Meeting ID: 871 4213 9365 , Passcode: 275723

<https://us02web.zoom.us/j/87142139365?pwd=spViLVcSm3ultdoAcPvaoMTFlUyBGJ.1>

The purpose of this Public Information Center is to present all interested parties with a description of the proposed design improvements at the intersection of Lakeside Ave (CR-636) and Pease Ave.

It is the intention of the County of Essex to obtain comments from all interested parties for use in evaluating the impact of the design. It is the goal of the County to improve pedestrian safety at intersections while maintaining the integrity of the corridors and limiting impacts to the surrounding environment, cultural resources, and properties.



U.S. Department
of Transportation
Federal Highway
Administration

Putting Essex County First

PROJECT BACKGROUND

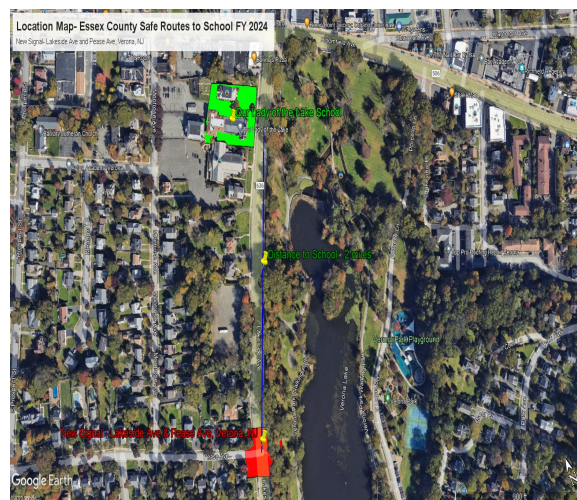
For the FY 2024 Safe Routes to School Program Essex County is proposing a new traffic signal at Lakeside Ave and Pease Ave in Verona Township, County of Essex. Lakeside Ave is a County Road, CR-636 and Essex County has full jurisdiction of this intersection. The installation of the new traffic signal will not only help residents in the area, but primarily, the students walking to and from "Our Lady of the Lake School". The new signal will include improvements such as Pedestrian Signal Heads, Push Buttons, High Visibility Crosswalks, Lead Pedestrian Interval (LPI) or Exclusive Pedestrian Phase in the signal timing, new sidewalk and ADA ramps. These improvements will help encourage more students to walk to school knowing that they will have the appropriate pedestrian user facilities and infrastructure that will allow them to get to school safely.

COMMUNITY RELATIONS

Essex County, in conjunction with NJDOT and NJTPA, is committed to developing roadway improvements that satisfy local and regional transportation needs and safety concerns. Residents from the surrounding area are encouraged to actively participate by attending public information centers. By participating, interested citizens can provide insight and suggestions that will assist engineers and governmental agencies in developing the most technically sound and environmentally sensitive alternative for improving the transportation infrastructure within the area that compliments current and future needs of the community.

TENTATIVE PROJECT SCHEDULE

Final Design & Construction Bidding	2025
Begin Construction	2Q 2026
Complete Construction	4Q 2026



KEY PROJECT ELEMENTS

- ✓ Improved safety for all users with a New Traffic Signal
- ✓ Pedestrian Signal Heads and Push Buttons
- ✓ High Visibility Crosswalks
- ✓ Improved walkability with new sidewalk and ADA curb ramps
- ✓ Milling, paving, striping and signage